

HT910 E

The Pentaband HSPA+ Terminal for use in Europe

The HT910 E is an industrial terminal that primarily uses the UMTS pentaband for mobile data transmission. The GSM / GPRS technology serves as fallback. The terminal with download rates of up to 7.2 Mbps is primarily intended for use in Europe.

The HT910 E terminal is especially interesting for customers who need high data transfer rates. In case of a temporary failure of the 3G mobile network, emergency operation can still be ensured via the conventional 2G network. Due to the integrated power saving mode, applications can be realized that have particularly high requirements for low power consumption.

For the connection of the terminal a RS232 interface and a USB 2.0 interface is available.

System integrators can develop their own applications in the programming language C and run them on the terminal.



Advantages

- Stationary applications can be monitored remotely and service calls can be reduced and optimized
- Fallback option in case of temporary failure of a mobile phone technology
- Robust product for industrial use
- Extremely low power consumption in power saving mode
- Programmable via C

Performance Features

- Pentaband HSPA+ Terminal
- Dual Band GSM
- Wireless firmware upgrade (FOTA)
- RS232 & USB 2.0 interfaces
- 1 analog input

Examples of applications



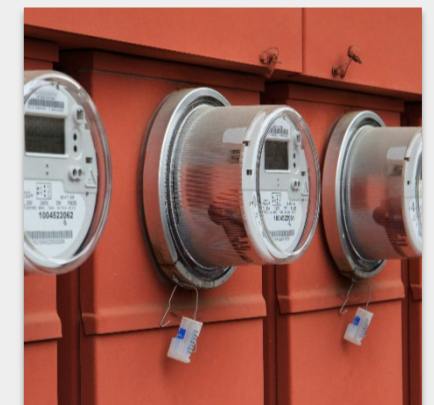
Monitoring of vending machines



Monitoring of industrial plants



Intelligent control of power grids



Transmission of smart meter data for e.g. electricity, gas and water



For live transmission of video recordings



Monitoring of heating, ventilation and air conditioning systems

Technical data

Mobile details

- Module: Telit UE910-EUD
- Frequency bands:
 - GSM: 900 / 1800 MHz
 - UMTS: B8 900, B4 2100 MHz
- GPRS Class 10
- EDGE Class 12
- Transmitting power:
 - -Class 4 (2W) for GSM 900
 - -Class 1 (1W) for GSM1800
 - -Class E2 (0.5 W, 27 dBm) for EDGE 900
 - -Class E2 (0.4W, 26 dBm) EDGE 1800
 - -Class 3 (0.25W, 24dBm) for UMTS
- SMS: Text and PDU modi, Cell Broadcast, SMS over GPRS
- USSD
- Additional features: DARP, CPC (DRX/DTX), dual-transfer mode
- Serial port multiplexer based on 3GPP 27.010
- SIM access profile

Transfer Rate

- EDGE
 - Uplink up to 237 kbit/s
 - Downlink up to 237 kbit/s
- HSPA
 - Uplink up to 5,7 Mbit/s
 - Downlink up to 7,2 Mbit/s
- CSD: Asynchronous, non-transparent, up to 9.6 kbit/s

Software

- AT command set: Hayes compliant, TS 27.005, 27.007 and Telit specific commands
- Programming language: C APIs for Telit AppZone
- Firmware update: FOTA
- SIM Application Toolkit
- TCP/IP-Stack: TCP, UDP, ICMP, HTTP, DNS, FTP, SSL, SMTP
- Jamming Detection

Power supply

- Voltage range: 5V-32V
- Power consumption (Idle Mode): ~14mA *
- Power consumption (Low Power Mode): ~10mA(*)
- USB host-powered: Optional (**)

Physical description

- Operating temperature: -30°C to +80°C
- Size: 77x66x26 mm
- Weight: 91g

Hardware features:

- IP protection : IP40
- Memory: 2MB RAM / 5MB Flash
- SIM-card holder: 1x (1,8/3 Volt)
- SIM Chip Option (**)
- LEDs: 1x UMTS/GSM status + 2x configurable
- Real time clock: With alarm function

Connectors

- D-Sub (9-polig): 1x socket for RS232
- USB: Mini-USB (USB 2.0)
- RJ11: 1x Power supply + 1x Analog input + 1x Optional output (**)
- FME: 1x Antenna connector

Approvals: CE

(*) Average values (including peaks) with minimum 1 minute measuring time

(**) Optional features: Please contact us to discuss your requirements for developing customized terminal products.

Additional extras (exemplary)

